



**VIVAX**  
**METROTECH**

# vScan & vScanM

Pipe & cable locator for avoidance & tracing applications



The ideal choice for the novice through  
to the skilled technician

[www.vxmt.com](http://www.vxmt.com) | [www.vivax-metrotech.com](http://www.vivax-metrotech.com)



# vScan utility avoidance tool

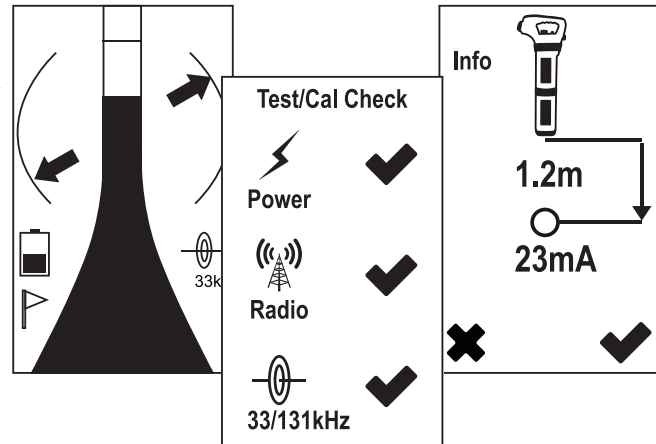
The vScan utility avoidance tool has been designed to make buried utility detection a simple and cost-effective process. You don't need to be an electronics expert to get the most out of the vScan's features. Main features and operational controls are in keeping with industry standards so minimal training is required.

Together with the dual frequency transmitter, data logging, optional metal manhole cover detector, GPS, and Bluetooth, the vScan is available in various models to suit all applications.

The vScan locator kits are shipped with a spacious canvas carry bag which fits the receiver, transmitter, leads and any optional accessories.

## Making locating easier.....

- Power and Radio modes - for passive locating
- 33kHz & 131kHz for active locating using optional transmitter
- Sonde modes of 33kHz, 512Hz/640Hz
- M mode for locating metal covers (vScanM only)
- Rotary control for sensitivity
- Paddle control for mode and navigation
- Two pushbuttons - on/off and depth/menu/select
- High contrast display with back-light
- Compass - arrows indicate line direction
- Depth and current measurement (configurable)
- Both internal & removable loudspeakers
- Internal or external GPS (optional)



# vScan Alerts, warnings and signal distortion

## A new standard for safety.....

- Self-test/calibration verification - confirms 100% locate functionality
- User settings for warnings/alerts
  - ▶ Visual
  - ▶ Vibrate warning
  - ▶ Audio warning
  - ▶ Shutdown

Real time alerts are displayed on the LCD accompanied with a mechanical vibration in the handle



**Signal Overload Warning** - usually caused by operating very close to a power transformer or placing the unit very close to a transmitter in the Induction mode.



**Shallow Cable** - indicates that the locator has detected a cable that is possibly less than 5.9"/15cm deep. Proceed with caution.



**Swing Alert** - indicates that the operator is swinging the locator excessively and could result in misleading information.



**Overhead Cable** - indicates that the signal is mainly radiating from above. This is usually caused by the signal travelling along overhead cables.



**Action Required Alert**

Select warnings, and how they communicate.  
Warnings advise but do NOT interrupt the locating process.





# Features of vScan avoidance tool

*The vScan saves you time.....saves you money*



**Warnings/Alerts** - provide information - they do not interrupt locating - configure them, using MyvScan, to receive a visual warning, audible warning, a sharp vibrate in the handle or all three. Some warnings can be configured to shut the unit down.



**Self-test and calibration verification** - check the vScan is working correctly - on demand or on a schedule you define in MyvScan. If work/safety practice allows, send the vScan for recalibration only if it fails self-test and calibration verification. Upload from the vScan a history of self-tests and calibration verification. Print a calibration certificate.



**Scheduler** - schedule maintenance, rental period, self-test/calibration verification schedule, or prompt to upload data. Define and select these warnings/alerts/reminders.



**Personalize** - add owner/user information, a background picture or logo, or a short message (such as..... "If found call 0800-xxx-xxxx" ). Also set preferred start up mode.



**Lock Feature** - all configurations can be locked, enabling equipment or safety officers to ensure that features selected or removed by management cannot be over ridden by the user. (Requires optional lockout dongle)



**Software updates and data transfer** - MyvScan checks for updates for the locator or desktop software whenever connected to internet. Connect the locator to MyvScan to load the software to the locator. Connect the locator to MyvScan to load the software and transfer data.



**Data Management** - MyvScan provides a variety of ways to select, sort and filter data. It enables the user to create selection/report templates. The data can be viewed on the computer display, saved, or exported as .xls, .csv, .kml, .jpg, .pdf files.

*Other ways vScan saves you money*



**Standard with all vScan transmitters.....**

**The "Dragon"** - a connection lead kit that virtually eliminates tangled leads, and helps to ensure that items like magnets and ground/earth stakes are not forgotten. (Note: Magnets are supplied as standard in UK)



**Rechargeable Batteries - Don't waste money on Alkaline batteries.....**

vScan's rechargeable battery (option) for both receiver and transmitter uses Lithium ion batteries. High capacity, no memory and the ability to hold a charge for a long time makes Lithium ion a most practical rechargeable choice. (Alkaline batteries can still be used if for any reason you run down or forget to charge the batteries.)

# Features of vScan avoidance tool

## vScan and vScanM Receivers.....Premium features included as standard

### RECEIVER

Feature	vScan	vScanM
High contrast display with back light	✓	✓
On/Off & depth/select pushbuttons	✓	✓
Rotary gain/sensitivity control	✓	✓
Paddle for navigating menus and modes	✓	✓
Power Mode	✓	✓
Radio Mode	✓	✓
Active Modes 33kHz & 131kHz	✓	✓
Sonde Modes 33kHz, 512Hz/640Hz	✓	✓
Metal Locate Mode		✓
Internal & removable loudspeakers	✓	✓
Removable wear boot	✓	✓
Alkaline batteries (6 x AA's)	✓	✓
Lithium ion rechargeable battery pack (& charger)	○	○
Carry bag	Standard when purchased with RX & Tx	
Depth measurement (configurable)	✓	✓
Current measurement (configurable)	✓	✓
Compass (line direction indicator)	✓	✓
Self-test and calibration verification	✓	✓
Recording of test/cal history	✓	✓
Printed cal certificate (using MyvScan)	✓	✓
Swing Alert	✓	✓
Shallow Line Alert	✓	✓
Signal Overload Alert	✓	✓
Overhead Signal Alert	✓	✓
Action Required Alert	✓	✓
Alert Notification (display, audio, vibrate, shutdown)	✓	✓
Battery Condition Status/Alert	✓	✓
Data logging	✓	✓
Bluetooth	○	○
Internal GPS	○	○
External GPS	○	○
MyvScan - Product configuration utility	✓	✓
MyvScan - Data transfer and management application	✓	✓
Pre-defined reports	✓	✓
Custom reporting	✓	✓

### TRANSMITTER

Feature	vScan/vScanM Transmitter
1-Watt output	✓
High/low output selection	✓
Pulse/continuous output	✓
Simple pushbutton controls/LED's	✓
Connection frequency - 33kHz/131kHz (simultaneous transmission)	✓
Clamp frequency - 33kHz/131kHz	✓
Induction frequency - 33kHz	✓
Tone change to indicate good connection	✓
Alkaline batteries (4 x D cells)	✓
Lithium ion battery and charger	○
Low battery warning	✓
The Dragon connection lead kit comprising:	
Dragon (tangle free - cable tidy)	✓
Connection leads	✓
Ground/earth stake	✓
2 x Magnets (UK market only)	✓
Tx foot - broad induction stand	✓

### ACCESSORIES

Receiver - Lithium ion battery and charger	○
Transmitter - Lithium ion battery and charger	○
Extension ground cable	○
50mm (2 inch) transmitter clamp	○
100mm (4 inch) transmitter clamp	○
125mm (5 inch) transmitter clamp	○
Clamp extension rod	○
Live plug connector (240V AC)	○
Live cable connector (480V AC)	○
D18 sonde - 33kHz	○
D23 sonde - 512 or 640Hz	○
D38 sonde - 33kHz	○
D64 sonde - 33kHz	○

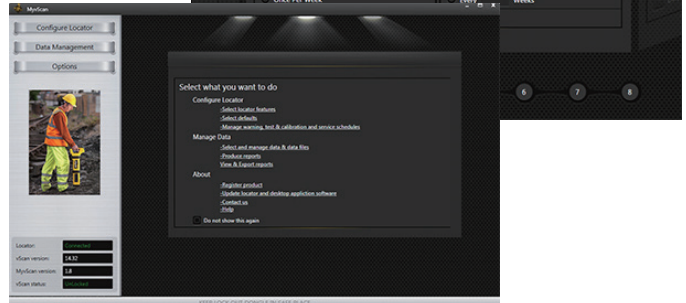
\* ✓ = standard, ○ = optional



# MyvScan App

Keep the operating system of the vScan up to date with the free MyvScan Desktop App. The vScan management tool allows the user to configure the features in the locator, download data collected from locating, set alarms useable while locating, and check and update the locator's firmware.

- **Software updates** – MyvScan checks for locator software updates and desktop software updates whenever connected to internet.
- **Data transfer** – MyvScan will download the data collected from the locator. This data can include the date, time, GPS coordinates, depth measurements and current on the line.
- **Personalize** – Add owner/user information, a background picture or logo, or a short message to the startup screen.
- **Lock feature** – The locator's configurations and settings can be locked, enabling equipment or safety officers to ensure that features selected or removed by management cannot be overridden by the user. (Requires optional lockout dongle)



# VMap Utility mapping and cloud storage

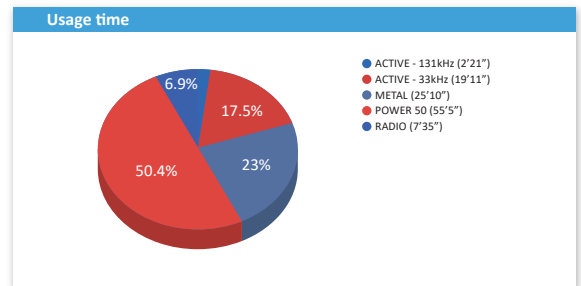
When used with the vScan Receiver, the VMap Utility Mapping app records data from the field which is instantly available online or can be shared by using the email function in the app to send .kml or .csv files. Field technicians using a vScan Receiver can capture and store to the cloud depth readings, GPS coordinates, distance between locates and more.

The image capture feature in the app allows the user to attach a JPEG format image to the surveys. This is useful to add points of interest or a snapshot of the completed survey. Access the image files and all the data captured in the app in the web portal or email it from within the app. The data is compatible with Google Maps, Asset Management and GIS software. The VMap app generates maps in real time giving confidence to the field technician that the data being collected is accurate. Location data is obtained from the mobile phone, the locators GPS or an external GPS device of your choice.

For Training Managers wishing to identify how the vScan is being used, VMAP offers the ability to have a real-time view of field usage stats. When paired with a mobile phone with the VMAP app installed, it is possible, via the cloud, to see how, when and where the equipment is being used. Information in the form of mapping data and usage pie charts are available in real-time helping to reduce that critical time between identifying training requirements and actual targeted training, resulting in a safer environment for both operators and below ground assets.

- Uses both Google and Apple Maps
- Low and high GPS accuracy settings
- Plug-and-play Bluetooth pairing to receivers
- Export to a .kml file for use with popular GIS programs
- Compatible with Google Maps, Asset Management and GIS software
- Show multiple utilities on one map with color coded utility drop pins

The VMap application is compatible with both iOS and Android devices.



### Vivax-Metrotech Ltd.

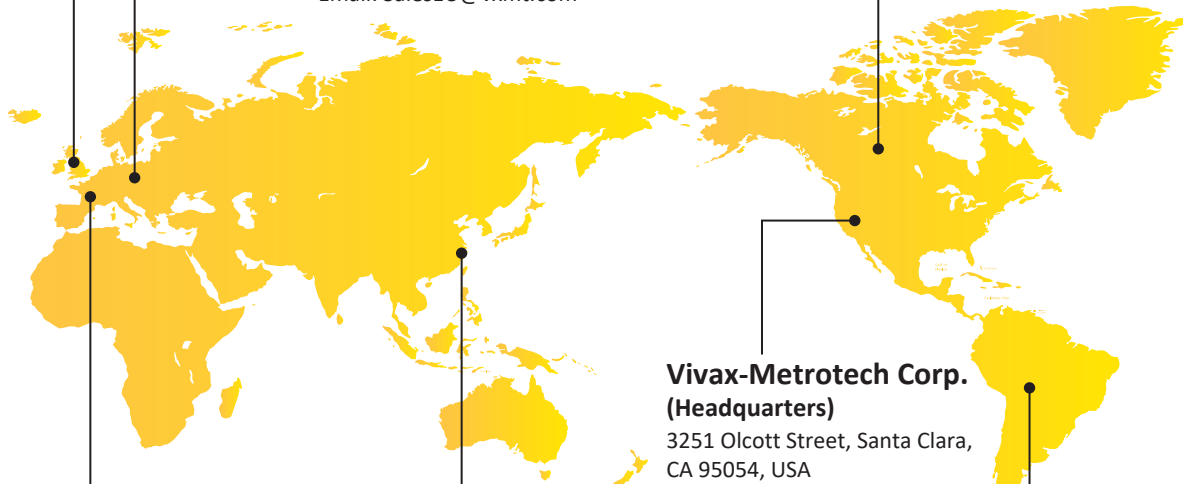
Unit 1, B/C Polden Business Centre, Bristol Road,  
Bridgwater, Somerset, TA6 4AW, UK  
Tel: +44(0)1793 822679  
Email: SalesUK@vxmt.com

### Vivax Canada Inc.

41 Courtland Ave Unit 6, Vaughan,  
ON L4K 3T3, Canada  
Tel: +1-289-846-3010  
Fax: +1-905-752-0214  
Email: SalesCA@vxmt.com

### Metrotech Vertriebs GmbH

Am steinernen Kreuz 10a  
D-96110 Schesslitz  
Tel: +49 954 277 227 43  
Email: SalesEU@vxmt.com



### Vivax-Metrotech (Shanghai) Ltd.

3/F No.90, Lane 1122 Qinzhou Rd.(N),  
Shanghai, China 200233  
Tel: +86-21-5109-9980  
Fax: +86-21-2281-9562  
Email: SalesCN@vxmt.com.cn

### Vivax-Metrotech Corp. (Headquarters)

3251 Olcott Street, Santa Clara,  
CA 95054, USA  
T/Free: 800-446-3392  
Phone: +1 (408) 734-1400  
Fax: +1-408-734-1415  
Email: SalesUSA@vxmt.com

### Vivax-Metrotech SAS

Technoparc - 1 allée du Moulin Berger,  
69130 Ecully, France  
Tel: +33 (0)472 53 03 03  
Fax: +33 (0)472 53 03 13  
Email: SalesFR@vxmt.com

### Ventas para América Latina

3251 Olcott Street, Santa Clara, CA 95054, USA  
T/Free: 800-446-3392  
Tel: +1-408-734-1400  
Fax: +1-408-743-5597  
Email: LatinSales@vxmt.com

Local Vivax-Metrotech Distributor:

CONNECT WITH US ON SOCIAL MEDIA



Disclaimer: Product and accessory specifications and availability is subject to change without prior notice.

V1.2 (Nov 2019)



## vScan utility avoidance tool

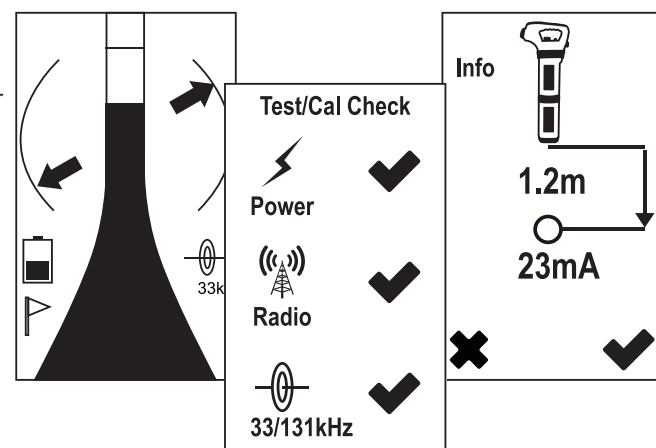
The vScan utility avoidance tool has been designed to make buried utility detection a simple and cost-effective process. You don't need to be an electronics expert to get the most out of the vScan's features. Main features and operational controls are in keeping with industry standards so minimal training is required.

Together with the dual frequency transmitter, data logging, optional metal manhole cover detector, GPS, and Bluetooth, the vScan is available in various models to suit all applications.

The vScan locator kits are shipped with a spacious canvas carry bag which fits the receiver, transmitter, leads and any optional accessories.

### Making locating easier.....

- Power and Radio modes - for passive locating
- 33kHz & 131kHz for active locating using optional transmitter
- Sonde modes of 33kHz, 512Hz/640Hz
- M mode for locating metal covers (vScanM only)
- Rotary control for sensitivity
- Paddle control for mode and navigation
- Two pushbuttons - on/off and depth/menu/select
- High contrast display with back-light
- Compass - arrows indicate line direction
- Depth and current measurement (configurable)
- Both internal & removable loudspeakers
- Internal or external GPS (optional)



## vScan Alerts, warnings and signal distortion

### A new standard for safety.....

- Self-test/calibration verification - confirms 100% locate functionality
- User settings for warnings/alerts
  - ▶ Visual
  - ▶ Vibrate warning
  - ▶ Audio warning
  - ▶ Shutdown

Real time alerts are displayed on the LCD accompanied with a mechanical vibration in the handle

**Signal Overload Warning** - usually caused by operating very close to a power transformer or placing the unit very close to a transmitter in the Induction mode.

**Shallow Cable** - indicates that the locator has detected a cable that is possibly less than 5.9"/15cm deep. Proceed with caution.

**Swing Alert** - indicates that the operator is swinging the locator excessively and could result in misleading information.

**Overhead Cable** - indicates that the signal is mainly radiating from above. This is usually caused by the signal travelling along overhead cables.

**Action Required Alert**

Select warnings, and how they communicate. Warnings advise but do NOT interrupt the locating process.



## Features of vScan avoidance tool

### The vScan saves you time.....saves you money



**Warnings/Alerts** - provide information - they do not interrupt locating - configure them, using MyvScan, to receive a visual warning, audible warning, a sharp vibrate in the handle or all three. Some warnings can be configured to shut the unit down.



**Self-test and calibration verification** - check the vScan is working correctly - on demand or on a schedule you define in MyvScan. If work/safety practice allows, send the vScan for recalibration only if it fails self-test and calibration verification. Upload from the vScan a history of self-tests and calibration verification. Print a calibration certificate.



**Scheduler** - schedule maintenance, rental period, self-test/calibration verification schedule, or prompt to upload data. Define and select these warnings/alerts/reminders.



**Personalize** - add owner/user information, a background picture or logo, or a short message (such as..... "If found call 0800-xxx-xxxx" ). Also set preferred start up mode.



**Lock Feature** - all configurations can be locked, enabling equipment or safety officers to ensure that features selected or removed by management cannot be over ridden by the user. (Requires optional lockout dongle)



**Software updates and data transfer** - MyvScan checks for updates for the locator or desktop software whenever connected to internet. Connect the locator to MyvScan to load the software to the locator. Connect the locator to MyvScan to load the software and transfer data.

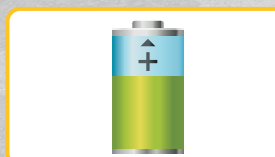


**Data Management** - MyvScan provides a variety of ways to select, sort and filter data. It enables the user to create selection/report templates. The data can be viewed on the computer display, saved, or exported as .xls, .csv, .kml, .jpg, .pdf files.

### Other ways vScan saves you money



**Standard with all vScan transmitters.....**  
**The "Dragon"** - a connection lead kit that virtually eliminates tangled leads, and helps to ensure that items like magnets and ground/earth stakes are not forgotten. (Note: Magnets are supplied as standard in UK)



**Rechargeable Batteries - Don't waste money on Alkaline batteries.....**  
 vScan's rechargeable battery (option) for both receiver and transmitter uses Lithium ion batteries. High capacity, no memory and the ability to hold a charge for a long time makes Lithium ion a most practical rechargeable choice. (Alkaline batteries can still be used if for any reason you run down or forget to charge the batteries.)

## Features of vScan avoidance tool

### vScan and vScanM Receivers.....Premium features included as standard

#### RECEIVER

Feature	vScan	vScanM
High contrast display with back light	✓	✓
On/Off & depth/select pushbuttons	✓	✓
Rotary gain/sensitivity control	✓	✓
Paddle for navigating menus and modes	✓	✓
Power Mode	✓	✓
Radio Mode	✓	✓
Active Modes 33kHz & 131kHz	✓	✓
Sonde Modes 33kHz, 512Hz/640Hz	✓	✓
Metal Locate Mode		✓
Internal & removable loudspeakers	✓	✓
Removable wear boot	✓	✓
Alkaline batteries (6 x AA's)	✓	✓
Lithium ion rechargeable battery pack (& charger)	○	○
Carry bag	Standard when purchased with RX & Tx	
Depth measurement (configurable)	✓	✓
Current measurement (configurable)	✓	✓
Compass (line direction indicator)	✓	✓
Self-test and calibration verification	✓	✓
Recording of test/cal history	✓	✓
Printed cal certificate (using MyvScan)	✓	✓
Swing Alert	✓	✓
Shallow Line Alert	✓	✓
Signal Overload Alert	✓	✓
Overhead Signal Alert	✓	✓
Action Required Alert	✓	✓
Alert Notification (display, audio, vibrate, shutdown)	✓	✓
Battery Condition Status/Alert	✓	✓
Data logging	✓	✓
Bluetooth	○	○
Internal GPS	○	○
External GPS	○	○
MyvScan - Product configuration utility	✓	✓
MyvScan - Data transfer and management application	✓	✓
Pre-defined reports	✓	✓
Custom reporting	✓	✓

#### TRANSMITTER

Feature	vScan/vScanM Transmitter
1-Watt output	✓
High/low output selection	✓
Pulse/continuous output	✓
Simple pushbutton controls/LED's	✓
Connection frequency - 33kHz/131kHz (simultaneous transmission)	✓
Clamp frequency - 33kHz/131kHz	✓
Induction frequency - 33kHz	✓
Tone change to indicate good connection	✓
Alkaline batteries (4 x D cells)	✓
Lithium ion battery and charger	○
Low battery warning	✓
The Dragon connection lead kit comprising:	
Dragon (tangle free - cable tidy)	✓
Connection leads	✓
Ground/earth stake	✓
2 x Magnets (UK market only)	✓
Tx foot - broad induction stand	✓
<b>ACCESSORIES</b>	
Receiver - Lithium ion battery and charger	○
Transmitter - Lithium ion battery and charger	○
Extension ground cable	○
50mm (2 inch) transmitter clamp	○
100mm (4 inch) transmitter clamp	○
125mm (5 inch) transmitter clamp	○
Clamp extension rod	○
Live plug connector (240V AC)	○
Live cable connector (480V AC)	○
D18 sonde - 33kHz	○
D23 sonde - 512 or 640Hz	○
D38 sonde - 33kHz	○
D64 sonde - 33kHz	○

\* ✓ = standard, ○ = optional



## MyvScan App

Keep the operating system of the vScan up to date with the free MyvScan Desktop App. The vScan management tool allows the user to configure the features in the locator, download data collected from locating, set alarms useable while locating, and check and update the locator's firmware.

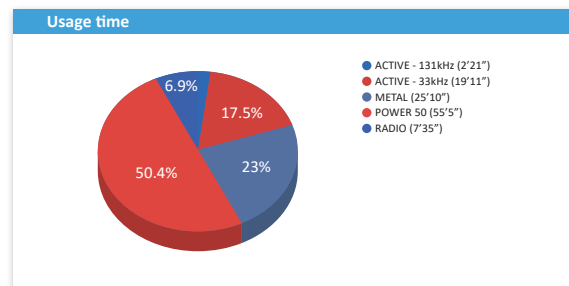
- **Software updates** – MyvScan checks for locator software updates and desktop software updates whenever connected to internet.
- **Data transfer** – MyvScan will download the data collected from the locator. This data can include the date, time, GPS coordinates, depth measurements and current on the line.
- **Personalize** – Add owner/user information, a background picture or logo, or a short message to the startup screen.
- **Lock feature** – The locator's configurations and settings can be locked, enabling equipment or safety officers to ensure that features selected or removed by management cannot be overridden by the user. (Requires optional lockout dongle)



## VMMMap Utility mapping and cloud storage

When used with the vScan Receiver, the VMMMap Utility Mapping app records data from the field which is instantly available online or can be shared by using the email function in the app to send .kml or .csv files. Field technicians using a vScan Receiver can capture and store to the cloud depth readings, GPS coordinates, distance between locates and more.

The image capture feature in the app allows the user to attach a JPEG format image to the surveys. This is useful to add points of interest or a snapshot of the completed survey. Access the image files and all the data captured in the app in the web portal or email it from within the app. The data is compatible with Google Maps, Asset Management and GIS software. The VMMMap app generates maps in real time giving confidence to the field technician that the data being collected is accurate. Location data is obtained from the mobile phone, the locators GPS or an external GPS device of your choice.



For Training Managers wishing to identify how the vScan is being used, VMMMap offers the ability to have a real-time view of field usage stats. When paired with a mobile phone with the VMMMap app installed, it is possible, via the cloud, to see how, when and where the equipment is being used. Information in the form of mapping data and usage pie charts are available in real-time helping to reduce that critical time between identifying training requirements and actual targeted training, resulting in a safer environment for both operators and below ground assets.

- Uses both Google and Apple Maps
- Low and high GPS accuracy settings
- Plug-and-play Bluetooth pairing to receivers
- Export to a .kml file for use with popular GIS programs
- Compatible with Google Maps, Asset Management and GIS software
- Show multiple utilities on one map with color coded utility drop pins

The VMMMap application is compatible with both iOS and Android devices.



### Vivax-Metrotech Ltd.

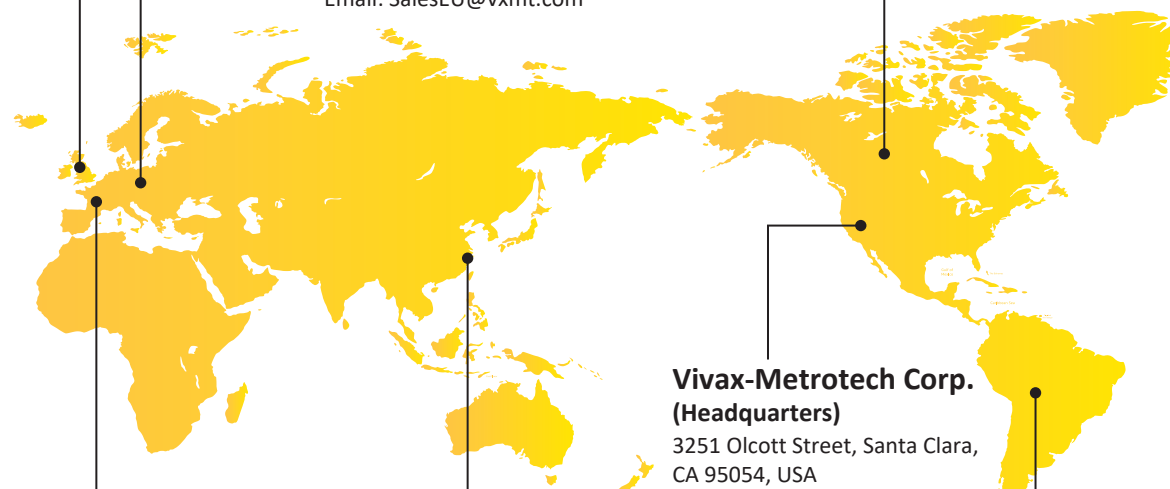
Unit 1, B/C Polden Business Centre, Bristol Road,  
Bridgwater, Somerset, TA6 4AW, UK  
Tel: +44(0)1793 822679  
Email: SalesUK@vxmt.com

### Vivax Canada Inc.

41 Courtland Ave Unit 6, Vaughan,  
ON L4K 3T3, Canada  
Tel: +1-289-846-3010  
Fax: +1-905-752-0214  
Email: SalesCA@vxmt.com

### Metrotech Vertriebs GmbH

Am steinernen Kreuz 10a  
D-96110 Schesslitz  
Tel: +49 954 277 227 43  
Email: SalesEU@vxmt.com



### Vivax-Metrotech (Shanghai) Ltd.

3/F No.90, Lane 1122 Qinzhou Rd.(N),  
Shanghai, China 200233  
Tel: +86-21-5109-9980  
Fax: +86-21-2281-9562  
Email: SalesCN@vxmt.com.cn

### Vivax-Metrotech Corp. (Headquarters)

3251 Olcott Street, Santa Clara,  
CA 95054, USA  
T/Free: 800-446-3392  
Phone: +1 (408) 734-1400  
Fax: +1-408-734-1415  
Email: SalesUSA@vxmt.com

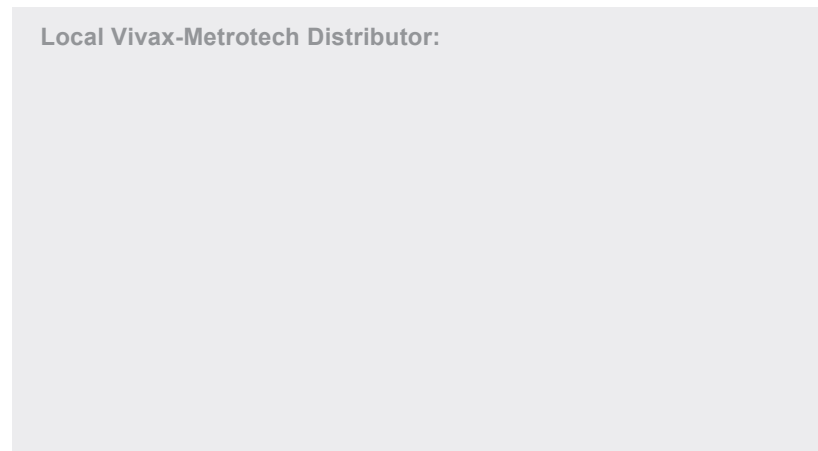
### Vivax-Metrotech SAS

Technoparc - 1 allée du Moulin Berger,  
69130 Ecully, France  
Tel: +33 (0)472 53 03 03  
Fax: +33 (0)472 53 03 13  
Email: SalesFR@vxmt.com

### Ventas para América Latina

3251 Olcott Street, Santa Clara, CA 95054, USA  
T/Free: 800-446-3392  
Tel: +1-408-734-1400  
Fax: +1-408-743-5597  
Email: LatinSales@vxmt.com

### Local Vivax-Metrotech Distributor:



### CONNECT WITH US ON SOCIAL MEDIA



V1.2 (Nov 2019)

Disclaimer: Product and accessory specifications and availability is subject to change without prior notice.



## vScan & vScanM

Pipe & cable locator for avoidance & tracing applications



The ideal choice for the novice through  
to the skilled technician

www.vxmt.com | www.vivax-metrotech.com

