

SENSORS & SOFTWARE® 
from RADIODETECTION

LMX200™

Utility locating with GPR made simple

Trying to avoid dangerous and costly hits
to critical utilities?

Want to find and map more utilities at your
job site?

Non-metallic utilities without tracer wires
giving you trouble?

If so, then LMX200™ is the right GPR for you.

SPX 
TECHNOLOGIES

Overview

LMX200™ GPR complements traditional pipe and cable locators and allows you to locate and map targets below the surface.

- Metal utilities, including pipes and cables
- Non-metallic pipes, including PVC and asbestos cement
- Concrete storm and sewer systems
- Utilities where installed tracer wiring has failed
- Underground storage tanks and drainage tiles
- Septic system components
- Non-utility structures such as vaults, foundation walls and concrete pads



High visibility touch screen display unit

- Free lifetime system software updates
- User selectable languages
- US Standard and Metric units



On-site Reports

- Produce instant on-site reports from your display unit



USB

- USB for easy data transfer



Integrated GPS

- Integrated GPS receiver for geo-referencing data



Wi-Fi

- Built-in Wi-Fi capability



GPR Sensor

- Patented ultra-wideband (UWB) 250 MHz GPR antenna
- DynaT™ for Dynamic Target enhancement
- Offers perfect balance of depth penetration (up to 8 m/26 ft) & high resolution



Lightweight Fiberglass Cart Frame

- No metal parts that would interfere with GPR signals
- Rugged, all-terrain cart with integrated odometer, easily maneuverable over any surface



Optional External GPS

- For high accuracy positioning and mapping



Lead Acid Gel Cell Battery

- Long lasting
- Swappable
- Locally available



Odometer

- To collect data at equal intervals

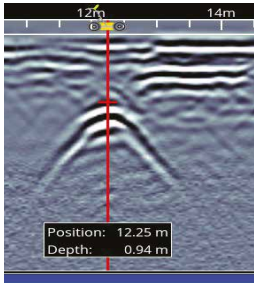


LMX200 features

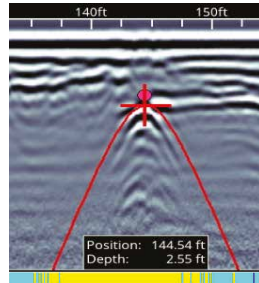
Rapidly locate **metallic** and **non-metallic utilities**

Enhance your productivity

Pinpoint Depth & Location

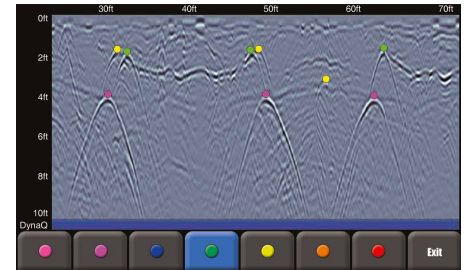


Easy Depth Calibration



No complex settings – Just press Start and push the cart.
Use hyperbola-fitting to ensure accurate depth measurements and backup over the target to display its location and depth.

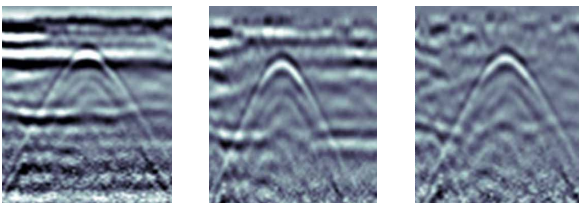
Color-coded field interpretations



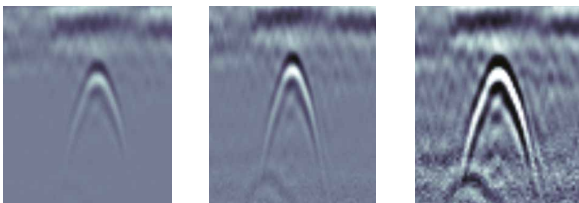
Classify your targets in real-time by selecting a color option and touching the screen.

Increase your target confidence in the field with image optimization

Preset Filters

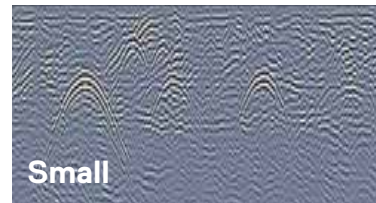


Adjustable Gain

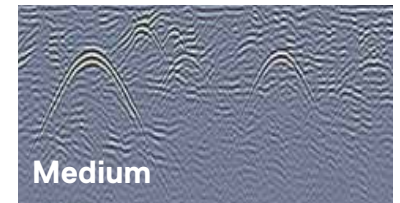


Optimize visibility of your targets with preset filters & gain.

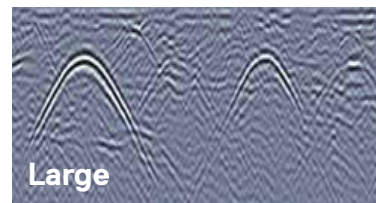
Dynamic Target Enhancement (DynaT)



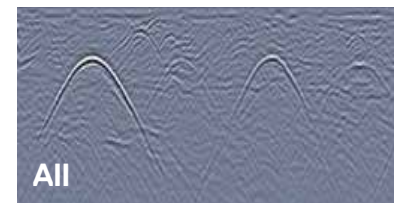
Small



Medium



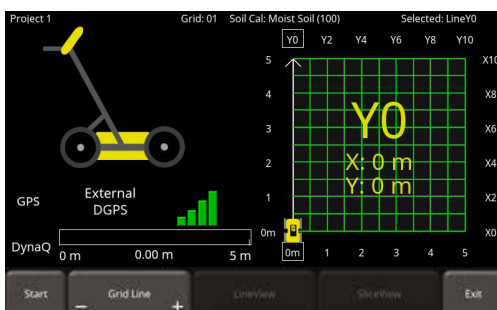
Large



All

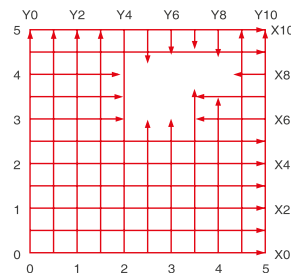
Enhance small, medium & large targets.

Grids & Depth Slices



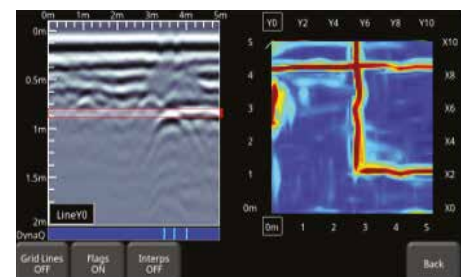
Flexible & guided grid collection

The LMX200 guides you through setup with pre-selected grid sizes. Stop lines early, or skip lines.



Obstacle avoidance

System guides data collection around an obstacle in your grid.

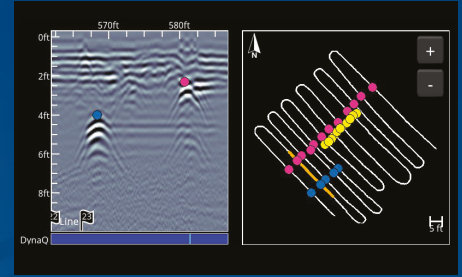


In-field Depth slices

Process grid data into depth slices and move down through your data to visualize targets at different depths. Depth Slice through multiple grids on-site.

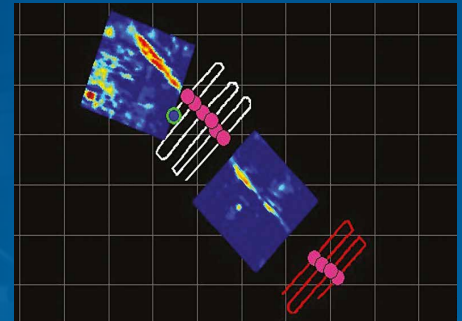
LMX200

Features unlocked with external GPS



SplitView – Real-time MapView during data collection

- Ensure full site coverage by visualizing your survey path
- See interpretations as you add them
- Review data for subtle targets that you may have missed
- Know your location, and go back to areas of interest



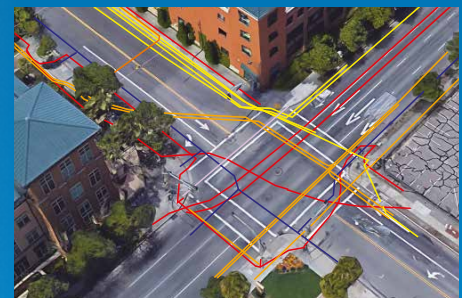
Visualize your entire survey in MapView

- See your survey path, depth slices, field interpretations and flags
- Slice through all depth slices simultaneously
- Toggle layers on and off to focus on elements of interest

Export geo-referenced data

	A	B	C	D	E	F
1	Tool	Position (m)	Depth (m)	Latitude	Longitude	GPS-Elevation
2	Point	0.72	0.18	38.8345202	-9.1821844	16.63
3	Point	0.83	0.7	38.8345201	-9.1821826	16.6
4	Point	1.12	0.75	38.8345187	-9.1821798	16.59
5	Point	1.63	0.19	38.8345172	-9.1821759	16.56
6	Point	1.63	0.68	38.8345172	-9.1821759	16.56

Spreadsheet (.CSV) file with flags and interpretations

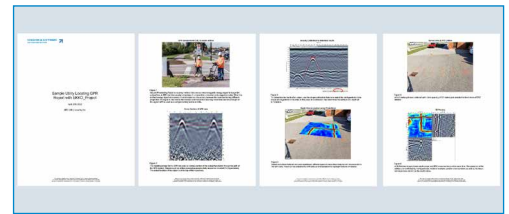
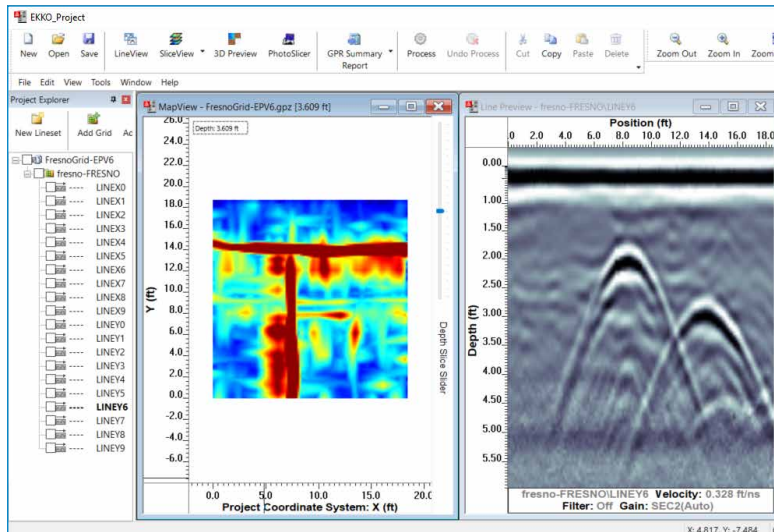


KMZ output of lines, grid locations, interpretations, and screenshots



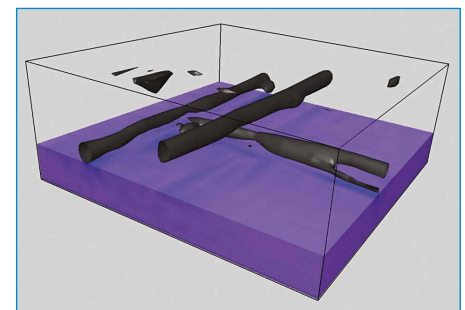
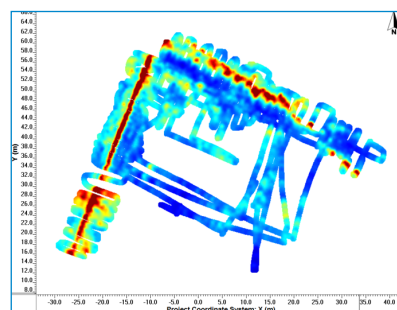
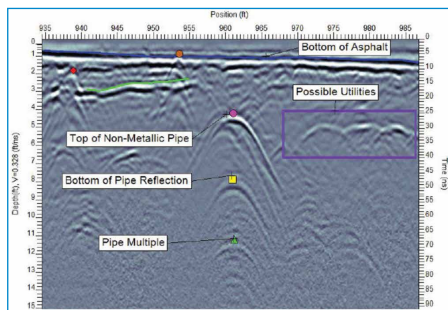
EKKO_Project™ Software

Visualize, Understand and Report your GPR results with the optional EKKO_Project PC Software



Core

Organize your GPR data, photos and other files and save as a single project file. Easily create PDF reports of your findings.



Examine (Cross-sections)

Reveal (Depth Slices)

3D Reveal (3D Visualization)

Weight & Dimensions	
Size: 100 x 70 x 115 cm (39.4 x 27.6 x 45.3 in)	
Weight: 22 kg (48 lbs)	
Display Unit size: 21 cm (8 in) diagonal	
Power	
12 volt sealed lead acid gel cell	
Battery Capacity: 9.0 Ah	Battery Weight: 3.6 kg (7.9 lbs)
Battery Life: 4-6 hours	Charger: 110-240V

Environmental & Temperatures	
Ruggedized, environmentally sealed unit and connections	
IP65	Operating temperature range: -40°C to +50°C (-104°F to 122°F)
Regulatory Specifications	
Meets FCC 15.509, IC RSS-220 and ETSI EN-302066	
Data Storage	Depth
380 km (236 miles) of data	Up to 8 meters (26 feet)

Useful resources to make the most of your LMX:

- [LMX200 training videos](#)
- [Utility Locating with GPR \(Nulca-accredited\) interactive and online course \(SensoftU.com\)](#)
- [Webinars and free online resources](#)
- [Learn more about our training offerings](#)

Our Mission

Provide best in class equipment and solutions, to prevent damage to critical infrastructure, manage assets and protect lives.

Our Vision

To be the world's leader in the management of critical infrastructure and utilities.

Our Locations



USA

Raymond, ME
Kearneysville, WV

Canada

Mississauga, ON



Europe

United Kingdom **HQ**
France
Germany
The Netherlands



Asia Pacific

India
China
Hong Kong
Indonesia
Australia

Visit: www.sensoft.ca Follow us on:    

CONTACT US

